



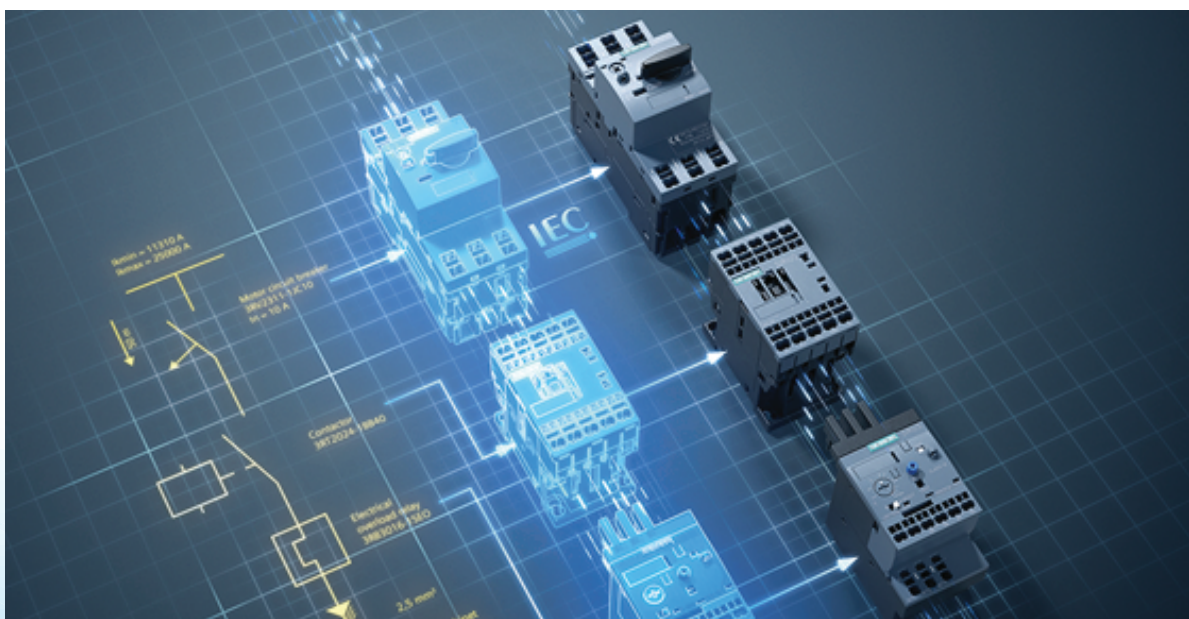
# Over 100 years of leadership in **switching technology**

Low Voltage Control Products  
Price List w.e.f. 15th November, 2021

**SIEMENS**

# Index

Contents		Page No.
<b>1</b>	<b>Power Quality Solutions</b>	<b>3-4</b>
	4RB LV Power Capacitors	3
	3RT26 Capacitor Duty Contactors	3
	7UG Automatic Power Factor Correction Relays	4
	4KA Harmonics Filter	4
<b>2</b>	<b>Low-voltage Control Products</b>	<b>5-15</b>
	Magnetic Contactors - 3RT series	5
	Accessories for 3RH2 and 3RT2 Magnetic Contactors	6
	Thermal Overload Relays - 3RU series	7
	Accessories for 3RU Thermal Overload Relays	7
	Thermal Overload Relays - 3UA/3UC series	8
	Accessories for 3UA/3UC Thermal Overload Relays	8
	Motor Protection Circuit Breakers- 3RV series	9
	Accessories for 3RV series	9
	Digital Soft Starters - 3RW30/55 series	10
	Agriculture and Industrial starters - 3TW/3TE series	11
	Electronic Timers- 3RP series	12
	Current Monitoring Relays- 3RR2 series	12
	Line Monitoring Relays- 3UG series	12
	Plug-in-relay - 7RQ series	13
	SIMOCODE Motor Management Systems	14
	Type-2 Co-ordination Charts	15-17
<b>3</b>	<b>Terms and conditions</b>	<b>18</b>



## SIECAP™ LV Power Capacitors

### ND (Normal Duty) - Al Can, MPP resin filled

- High pulse current withstand capability (upto 200.Ir)
- Long life expectancy upto 100000 hrs
- Self healing type
- Inbuilt over pressure disconnecter
- Shock hazard protected SIGUT terminals

Rated voltage V	kvar @ 50 Hz	Type	Unit LP* ↳	Std. pkg. (nos.)
440	1	4RB2010-3EE50-8K	POR	1
	2.1	4RB2021-3EE50-8K	POR	1
	5	4RB2050-3EE50-8K	POR	1
	7.5	4RB2075-3EE50-8K	POR	1
	10	4RB2100-3EE50-8K	POR	1
	12.5	4RB2125-3EE50-8K	POR	1
	15	4RB2150-3EE50-8K	POR	1
	20	4RB2200-3EE50-8K	POR	1
25	4RB2250-3EE50-8K	POR	1	



### SHD (Super Heavy Duty) - Al Can, MPP resin filled

- High pulse current withstand capability (upto 500.Ir)
- Long life expectancy upto 200000 hrs
- Self healing type
- Inbuilt over pressure disconnecter
- Shock hazard protected SIGUT terminals

Rated voltage V	kvar @ 50 Hz	Type	Unit LP* ↳	Std. pkg. (nos.)
440	1	4RB1010-3EE50-8K	1,700/-	1
	2	4RB1020-3EE50-8K	1,700/-	1
	5	4RB1050-3EE50-8K	2,600/-	1
	7.5	4RB1075-3EE50-8K	5,200/-	1
	10	4RB1100-3EE50-8K	5,200/-	1
	12.5	4RB1125-3EE50-8K	6,800/-	1
	15	4RB1150-3EE50-8K	6,800/-	1
	20	4RB1200-3EE50-8K	8,400/-	1
25	4RB1250-3EE50-8K	10,300/-	1	



## 3RT26 Capacitor Duty Contactors (AC-6b)

- De-latching operating principle
- SIGUT Termination technique
- Reliable switching of capacitor banks
- Coil Voltage: 24V, 110V & 230V AC for 3RT26 Contactor
- Assembled in Germany

Capacitor kvar 440V AC, 3Ph, 50Hz	Coil voltage	Built-in aux. contacts	Type	Unit LP* ↳	Std. pkg. (nos.)
12.5kvar	230V AC	1NO+1NC	3RT2617-1AP03	6,200/-	1
25kvar	230V AC	1NO+2NC	3RT2627-1AP05	9,300/-	1
50kvar	230V AC	1NO+1NC	3RT2636-1AP03	18,500/-	1



Std. Pkg. = 1 unit

\* LP - List Price

# Automatic Power Factor Correction Relay (APFC relay)

- Easy accessibility of parameters
- Universal control supply—optimizing the no of variants
- Automatic/ Linear/ rotational switching modes of banks
- Selectable 1A/ 5A current input
- LCD version with RS485 Communication MODBUS RTU Protocol
- Confirms to IEC60947-5-1, carry CE and RoHS Compliant



for more info scan QR code



7UG0572-1GT20

Description		Type	Unit LP ↴	Std. pkg. (nos.)
Automatic Power factor correction relay (APFC relay)	8 Stage with LCD display	7UG0571-1FT20	23,900/-	1
	12 Stage with LCD display	7UG0572-1GT20	25,100/-	1
	12 Stage with LED display	7UG0572-1GT21	17,000/-	1

## Harmonics filter

### Detuned reactor

#### Features

- Insulation class H
- High linearity
- Temperature control via micro switch
- Low losses and low noise



### Copper Detuned Reactors

Bank Size	Detuning factor	Type	Unit LP ↴
5kvar	7%	4KA1220-1AA01-0AA0	25,900/-
10kvar	7%	4KA1220-3AA01-0AA0	35,100/-
12.5kvar	7%	4KA1220-4AA01-0AA0	39,900/-
15kvar	7%	4KA1220-5AA01-0AA0	48,800/-
20kvar	7%	4KA1220-6AA01-0AA0	53,200/-
25kvar	7%	4KA1220-7AA01-0AA0	55,200/-
50kvar	7%	4KA1220-2BA01-0AA0	85,900/-
100kvar	7%	4KA1220-4BA03-0AA0	175,400/-
5kvar	14%	4KA1220-1AB01-0AA0	33,700/-
10kvar	14%	4KA1220-3AB01-0AA0	58,100/-
12.5kvar	14%	4KA1220-4AB01-0AA0	73,600/-
15kvar	14%	4KA1220-5AB01-0AA0	72,600/-
20kvar	14%	4KA1220-6AB01-0AA0	90,700/-
25kvar	14%	4KA1220-7AB01-0AA0	118,400/-
50kvar	14%	4KA1220-2BB01-0AA0	193,800/-
75kvar	14%	4KA1220-3BB03-0AA0	313,200/-
100kvar	14%	4KA1220-4BB03-0AA0	379,500/-

### Aluminium Detuned Reactors

Bank Size	Detuning factor	Type	Unit LP ↴
5kvar	7%	4KA1420-1AA01-0AA0	23,400/-
10kvar	7%	4KA1420-3AA01-0AA0	27,800/-
12.5kvar	7%	4KA1420-4AA01-0AA0	28,600/-
15kvar	7%	4KA1420-5AA01-0AA0	41,100/-
20kvar	7%	4KA1420-6AA01-0AA0	45,200/-
25kvar	7%	4KA1420-7AA01-0AA0	46,600/-
50kvar	7%	4KA1420-2BA01-0AA0	71,900/-
75kvar	7%	4KA1420-3BA03-0AA0	121,600/-
100kvar	7%	4KA1420-4AB03-0AA0	140,800/-
5kvar	14%	4KA1420-1AB01-0AA0	31,500/-
10kvar	14%	4KA1420-3AB01-0AA0	53,700/-
12.5kvar	14%	4KA1420-4AB01-0AA0	63,600/-
15kvar	14%	4KA1420-5AB01-0AA0	66,800/-
20kvar	14%	4KA1420-6AB01-0AA0	81,200/-
25kvar	14%	4KA1420-7AB01-0AA0	92,800/-
50kvar	14%	4KA1420-2BB01-0AA0	126,500/-



# Power Contactors

## 3RT (S00 to S12) with "Mirror contacts elements"

Made in Germany

Screw terminals



Size	AC-3 operational current I <sub>e</sub> upto 415V A	Motor rating at 415V, 50Hz kW	Auxiliary contacts	AC Coil <sup>§</sup>			DC Coil <sup>®</sup>		
				Type*	Unit LP <sup>1)</sup> ⚡	Std. pkg. (nos.)	Type*	Unit LP <sup>1)</sup> ⚡	Std. pkg. (nos.)
S00	7	3	1NO	3RT2015-1A..1	2,300/-	1	3RT2015-1B..1	2,700/-	1
			1NC	3RT2015-1A..2	2,300/-	1	3RT2015-1B..2	2,700/-	1
	9	4	1NO	3RT2016-1A..1	2,400/-	1	3RT2016-1B..1	2,800/-	1
			1NC	3RT2016-1A..2	2,400/-	1	3RT2016-1B..2	2,800/-	1
	12	5.5	1NO	3RT2017-1A..1	2,500/-	1	3RT2017-1B..1	3,100/-	1
			1NC	3RT2017-1A..2	2,500/-	1	3RT2017-1B..2	3,100/-	1
16	7.5	1NO	3RT2018-1A..1	3,300/-	1	3RT2018-1B..1	5,200/-	1	
		1NC	3RT2018-1A..2	3,300/-	1	3RT2018-1B..2	5,200/-	1	
S0	9	4	1NO+1NC	3RT2023-1A..0	2,600/-	1	3RT2023-1B..0	5,000/-	1
	12	5.5	1NO+1NC	3RT2024-1A..0	2,700/-	1	3RT2024-1B..0	5,700/-	1
	17	7.5	1NO+1NC	3RT2025-1A..0	3,700/-	1	3RT2025-1B..0	6,200/-	1
	25	11	1NO+1NC	3RT2026-1A..0	4,200/-	1	3RT2026-1B..0	6,700/-	1
	32	15	1NO+1NC	3RT2027-1A..0	7,700/-	1	3RT2027-1B..0	9,300/-	1
	38	18.5	1NO+1NC	3RT2028-1A..0	11,300/-	1	3RT2028-1B..0	13,400/-	1

Size	AC-3 operational current I <sub>e</sub> upto 415V A	Motor rating at 415V, 50Hz kW	Auxiliary contacts	AC Coil <sup>§</sup>			AC/DC Coil <sup>€</sup>		
				Type	Unit LP <sup>1)</sup> ⚡	Std. pkg. (nos.)	Type	Unit LP <sup>1)</sup> ⚡	Std. pkg. (nos.)
S2	50	22	1NO+1NC	3RT2036-1A..0	13,200/-	1	3RT2036-1N..0	16,500/-	1
	65	30	1NO+1NC	3RT2037-1A..0	17,500/-	1	3RT2037-1N..0	22,600/-	1
	80	37	1NO+1NC	3RT2038-1A..0	21,100/-	1	3RT2038-1N..0	26,700/-	1
S3	95	45	1NO+1NC	3RT2046-1A..0	23,600/-	1	3RT2046-1N..0	29,800/-	1
	110	55	1NO+1NC	3RT2047-1A..0	29,800/-	1	3RT2047-1N..0	37,500/-	1

Size	AC-3 operational current I <sub>e</sub> upto 415V A	Motor rating at 415V, 50Hz kW	Auxiliary contacts	AC/DC Coils (Conventional Type) <sup>€</sup>			AC/DC Coils (Solid-state op. mech for 24V DC operation) <sup>€</sup>		
				Type	Unit LP ⚡	Std. pkg. (nos.)	Type	Unit LP ⚡	Std. pkg. (nos.)
S6	115	55	2NO+2NC	3RT10 54-6A.36	29,800/-	1	3RT10 54-6N.36	30,900/-	1
	150	75	2NO+2NC	3RT10 55-6A.36	38,000/-	1	3RT10 55-6N.36	39,400/-	1
	185	90	2NO+2NC	3RT10 56-6A.36	51,300/-	1	3RT10 56-6N.36	53,200/-	1
S10	225	110	2NO+2NC	3RT10 64-6A.36	63,600/-	1	3RT10 64-6N.36	66,000/-	1
	265	132	2NO+2NC	3RT10 65-6A.36	71,800/-	1	3RT10 65-6N.36	74,500/-	1
	300	160	2NO+2NC	3RT10 66-6A.36	84,700/-	1	3RT10 66-6N.36	87,800/-	1
S12	400	200	2NO+2NC	3RT10 75-6A.36	107,700/-	1	3RT10 75-6N.36	111,800/-	1
	500	250	2NO+2NC	3RT10 76-6A.36	148,800/-	1	3RT10 76-6N.36	154,300/-	1

§@€ Please enter coil codes from table below    € available with universal operation    # 40A Size S0 3RT2028 contactor is available with screw type terminals only

\* For ordering contactors with spring type terminals, please replace 8th digit from '1' to '2' only for size S00, S0.

### Rated control supply voltages

(For 3RT2 Change the 10th & 11th digit and for 3RT1 Change the 10th digit of Type no.)

#### \$ - AC operation 50/60Hz

Contactors type	3RT20 1	3RT20 2	3RT20 3	3RT20 4
Size	S00	S0	S2	S3
24 V AC	B0	C2	C2	C2
110 V AC	F0	G2	G2	G2
230 V AC	P0	L2	L2	L2

#### @ - DC operation

Contactors type	3RT20 1, 3RH2	3RT20 2	3RT20 3	3RT20 4
Size	S00	S0	S2	S3
24 V DC	B4	B4	-	-
110 V DC	F4	F4	-	-
220 V DC	M4	M4	-	-

#### € - Universal operation (AC / DC) for 3RT2 S2, S3 and for 3RT1 S6, S10, S12

Contactors Type	3RT203..-N	3RT204..-N
Size	S2	S3
20...33 V AC/DC	B3	B3
83...155 V AC/DC	F3	F3
175...280 V AC/DC	P3	P3

Contactors Type	3RT1_Conventional Coil
Size	S6, S10, S12
110...127 V AC/DC	F
220...240 V AC/DC	P

Contactors Type	3RT1_Solid-State Coil
Size	S6, S10, S12
96...127 V AC/DC	F
200...277 V AC/DC	P

1) For ordering contactors with other than above coil voltages, please add Rs. 170/- to the unit LP of standard contactor of the same rating.

Please contact nearest sales office for other coil voltages

**Note:** All SIRIUS 3RT20 / 3RT10 contactors (with at least 1 NC auxiliary contact) are tested to "Mirror contacts" characteristics in conjunction with auxiliary contacts ever since the launch of product

LP - List Price

## Accessories for 3RH2 & 3RT2 contactors (S00 / S0 / S2 / S3)

### Auxiliary Contact Blocks (S00 / S0 / S2 / S3)

for snapping onto the front

For	NO	NC	Type*	Unit LP b	Std. pkg. (nos.)
S00 / S0 / S2 / S3	1	–	3RH1921-1CA10	600/-	1
	–	1	3RH1921-1CA01		1
	1	1	3RH1921-1EA11	1,400/-	1
	2	2	3RH2911-1FA22	1,600/-	1
	2	2	3RH2911-1HA22	1,600/-	1
	2	2	3RH2122-1AP00	2,600/-	1
	2	2	3RH2122-1AB00		1
	4	4	3RH2244-1BB40	5,200/-	1



\* For ordering auxiliary contact blocks with Spring type terminals, please replace 8th digit from '1' to '2'

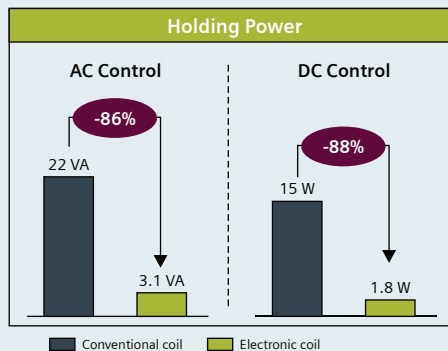
## SIRIUS Innovation - Energy Efficient Contactor Portfolio (9A to 500A AC-3)

Contactor coil consumes continuous power as long as in operation



3RT20 | 95A AC-3

### Typical Holding Power data comparison



Contactors with Electronic coil can be upto **88%** more Energy Efficient as compared to conventional AC or DC contactor

### Typical Coil Consumption (Holding)

12-38A AC-3   3RT202.-1N..0		
	AC Control	DC Control
Size S0	1.9 VA	1.4 W

50-80A AC-3   3RT203.-1N..0		
	AC Control	DC Control
Size S2	2 VA	1 W

95-110A AC-3   3RT204.-1N..0		
	AC Control	DC Control
Size S3	3.1 VA	1.8 W

115-185A AC-3   3RT105.-6N.36		
	AC Control	DC Control
Size S6	3.5 VA	2.1 W

225-300A AC-3   3RT106.-6N.36		
	AC Control	DC Control
Size S10	5.5 VA	2.8 W

400-500A AC-3   3RT107.-6N.36		
	AC Control	DC Control
Size S12	5.6 VA	3 W

# Thermal Overload Relays - 3RU

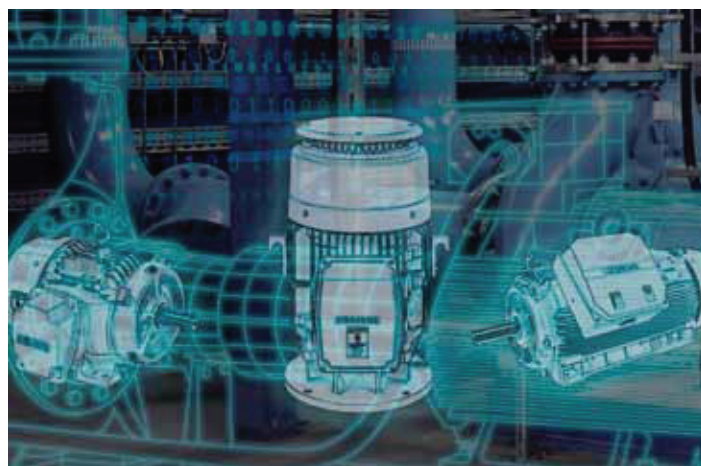


For contactor mounting - Class 10 - Screw Terminals

Size of relay / contactor	Set current value of the inverse-time delayed overload release A	Type#	Unit LP $\ddagger$	Std. pkg. (nos.)		
S00	0.11 ... 0.16	3RU2116-0AB0	4,000/-	1		
	0.14 ... 0.2	3RU2116-0BB0				
	0.18 ... 0.25	3RU2116-0CB0				
	0.22 ... 0.32	3RU2116-0DB0				
	0.28 ... 0.4	3RU2116-0EB0				
	0.35 ... 0.5	3RU2116-0FB0				
	0.45 ... 0.63	3RU2116-0GB0				
	0.55 ... 0.8	3RU2116-0HB0				
	0.7 ... 1	3RU2116-0JB0				
	0.9 ... 1.25	3RU2116-0KB0				
	1.1 ... 1.6	3RU2116-1AB0				
	1.4 ... 2	3RU2116-1BB0				
	1.8 ... 2.5	3RU2116-1CB0				
	2.2 ... 3.2	3RU2116-1DB0				
	2.8 ... 4	3RU2116-1EB0				
	3.5 ... 5	3RU2116-1FB0				
	4.5 ... 6.3	3RU2116-1GB0				
	5.5 ... 8	3RU2116-1HB0			4,400/-	1
7 ... 10	3RU2116-1JB0					
9 ... 12.5	3RU2116-1KB0					
S0	11 ... 16	3RU2116-4AB0	4,000/-	1		
	1.8 ... 2.5	3RU2126-1CB0				
	2.2 ... 3.2	3RU2126-1DB0				
	2.8 ... 4	3RU2126-1EB0				
	3.5 ... 5	3RU2126-1FB0				
	4.5 ... 6.3	3RU2126-1GB0				
	5.5 ... 8	3RU2126-1HB0				
	7 ... 10	3RU2126-1JB0				
	9 ... 12.5	3RU2126-1KB0			4,400/-	1
	11 ... 16	3RU2126-4AB0				
	14 ... 20	3RU2126-4BB0			4,600/-	1
	17 ... 22	3RU2126-4CB0				
	20 ... 25	3RU2126-4DB0			5,600/-	1
	23 ... 28	3RU2126-4NB0				
27 ... 32	3RU2126-4EB0					
30 ... 36	3RU2126-4PB0					
34 ... 40	3RU2126-4FB0					

Size of relay / contactor	Set current value of the inverse-time delayed overload release A	Type#	Unit LP $\ddagger$	Std. pkg. (nos.)
S2	11 ... 16	3RU2136-4AB0	4,600/-	1
	14 ... 20	3RU2136-4BB0	4,600/-	
	18 ... 25	3RU2136-4DB0	4,700/-	
	22 ... 32	3RU2136-4EB0	5,900/-	
	28 ... 40	3RU2136-4FB0	5,900/-	
	36 ... 45	3RU2136-4GB0	11,300/-	
	40 ... 50	3RU2136-4HB0	11,300/-	
	47 ... 57	3RU2136-4QB0	11,300/-	
	54 ... 65	3RU2136-4JB0	11,300/-	
	62 ... 73	3RU2136-4KB0	11,300/-	
	70 ... 80	3RU2136-4RB0	11,300/-	
	S3	28 ... 40	3RU2146-4FB0	
36 ... 50		3RU2146-4HB0	11,300/-	
45 ... 63		3RU2146-4JB0	11,300/-	
57 ... 75		3RU2146-4KB0	11,300/-	
70 ... 90		3RU2146-4LB0	11,300/-	
80 ... 100		3RU2146-4MB0	19,000/-	
50 ... 200		3RB2056-1FC2	20,000/-	
50 ... 200		3RB2056-1FW2	20,000/-	
55 ... 250		3RB2066-1GC2	22,100/-	
160 ... 630		3RB2066-1MC2	35,900/-	

\* To order overload relays with spring-type terminals replace 10th digit from 'B' to 'C' (for S00, S0 size only)



## Accessory for independent mounting

For size of relay	Relay type	Type	Unit LP $\ddagger$	Std. pkg. (nos.)
S00*	3RU21, 3RB30/31, 3RR21/22/24	3RU2916-3AA01	POR	1
S0*	3RU21, 3RB30/31, 3RR21/22/24	3RU2926-3AA01		1
S2	3RU21, 3RB30/31, 3RR21/22/24	3RU2936-3AA01		1
S3	3RU21/3RB30/3RB31	3RU2946-3AA01		1



\* To order terminal supports for overload relays with spring-type terminals replace 10th digit from 'A' to 'C' for S00, S0 only

## Thermal overload relays - 3UA / 3UC

### Relays for heavy starting applications, independent mounting

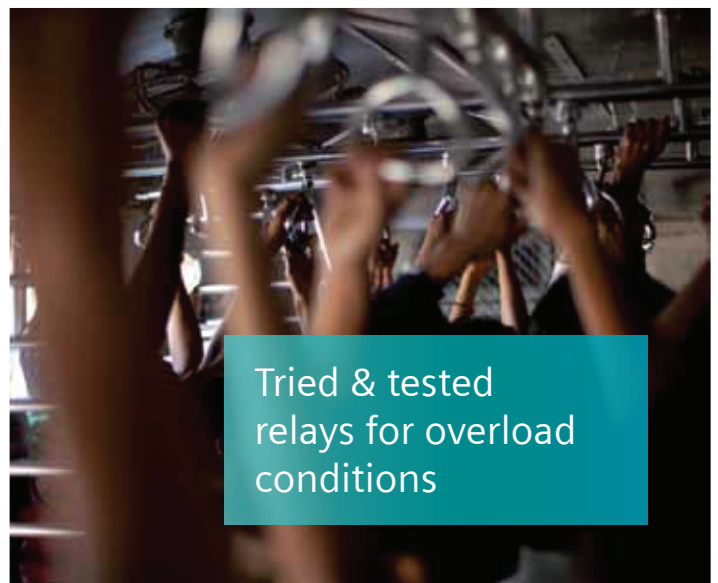
Bimetal relay	Current type of mounting	Current setting range A	Type	Unit LP <sup>b</sup>	Std. pkg. (nos.)
3UA50	Contactor® mounting (3TF30/31)	0.1 – 0.16	3UA5000-0A	3,500/-	1
		0.16 – 0.25	3UA5000-0C		
		0.25 – 0.4	3UA5000-0E		
		0.4 – 0.63	3UA5000-0G		
		0.63 – 1	3UA5000-0J		
		0.8 – 1.25	3UA5000-0K		
		1 – 1.6	3UA5000-1A		
		1.25 – 2	3UA5000-1B		
		1.6 – 2.5	3UA5000-1C		
		2 – 3.2	3UA5000-1D		
		2.5 – 4	3UA5000-1E		
		3.2 – 5	3UA5000-1F		
		4 – 6.3	3UA5000-1G		
		5 – 8	3UA5000-1H		
		6.3 – 10	3UA5000-1J	3,700/-	1
8 – 12.5	3UA5000-1K				
10 – 14.5	3UA5000-2S				
3UA52	Contactor® mounting (3TF32/33)	1 – 1.6	3UA5200-1A	4,100/-	1
		1.25 – 2	3UA5200-1B		
		1.6 – 2.5	3UA5200-1C		
		2 – 3.2	3UA5200-1D		
		2.5 – 4	3UA5200-1E		
		3.2 – 5	3UA5200-1F		
		4 – 6.3	3UA5200-1G	4,100/-	1
		5 – 8	3UA5200-1H		
		6.3 – 10	3UA5200-1J		
		8 – 12.5	3UA5200-1K		
		10 – 16	3UA5200-2A	4,400/-	1
		12.5 – 20	3UA5200-2B		
16 – 25	3UA5200-2C				
3UA55	Contactor® mounting (3TF34/35, 44/45)	10 – 16	3UA5500-2A	5,200/-	1
		12.5 – 20	3UA5500-2B		
		16 – 25	3UA5500-2C		
		20 – 32	3UA5500-2D		
		25 – 36	3UA5500-2Q	5,700/-	1
		32 – 40	3UA5500-2R		
		36 – 45	3UA5500-8M		
3UA58-Z1	Contactor® mounting (3TF46, 3TF47, 3TF48, 3TF49)	16 – 25	3UA5800-2CZ1	8,400/-	1
		20 – 32	3UA5800-2DZ1		
		25 – 40	3UA5800-2EZ1		
		32 – 50	3UA5800-2FZ1	8,400/-	1
		40 – 57	3UA5800-2TZ1		
		50 – 63	3UA5800-2PZ1		
		57 – 70	3UA5800-2VZ1	8,400/-	1
		63 – 80	3UA5800-2UZ1		
		70 – 95	3UA5800-8YZ1		
3UA58-Z2	Contactor® mounting (3TF47 7)	16 – 25	3UA5800-2CZ2	8,400/-	1
		20 – 32	3UA5800-2DZ2		
		25 – 40	3UA5800-2EZ2		
		32 – 50	3UA5800-2FZ2	8,400/-	1
		40 – 57	3UA5800-2TZ2		
		50 – 63	3UA5800-2PZ2		
57 – 70	3UA5800-2VZ2	8,400/-	1		
63 – 80	3UA5800-2UZ2				
3UA58 30	Contactor® mounting (3TF50)	70 – 95	3UA5830-5B	13,900/-	1
		85 – 105	3UA5830-5C	13,900/-	1
		95 – 120	3UA5830-5D		
3UA62	Independent mounting	85 – 135	3UA6230-5A	20,300/-	1
		115 – 180	3UA6230-5B		
		160 – 250	3UA6230-5C	20,300/-	1
		200 – 320	3UA6230-5D	20,300/-	1
3UA68	Independent mounting	250 – 400	3UA6230-5E	33,800/-	1
		320 – 500	3UA6830-5F	48,300/-	1
		400 – 630	3UA6830-5G		

Current setting range A	Type	Unit MRP <sup>b</sup>	Current setting range A	Type	Unit LP <sup>b</sup>	Std. pkg. (nos.)
2.5 – 4	3UC5030-5E	27,500/-	40 – 63	3UC5830-5G	27,500/-	1
4 – 6.3	3UC5030-5G		63 – 100	3UC6230-5J	29,300/-	1
6.3 – 10	3UC5030-5J			3UC6230-5A		1
8 – 12.5	3UC5030-5K		100 – 160	3UC6630-5B		1
10 – 16	3UC5830-5A		125 – 200	3UC6630-5C		1
16 – 25	3UC5830-5C		160 – 250	3UC6630-5E		1
25 – 40	3UC5830-5E		250 – 400			1

Note: Relays always supplied in manual execution, can be converted at site to auto execution.

## Accessories for 3UA birelays

Description	For relay type	Type	Unit LP <sup>b</sup>	Std. pkg. (nos.)
Accessory for independent mounting	3UA50	3UX1418	POR	1
	3UA52	3UX1420		1
	3UA55	3UX1425		1
	3UA58	3UX1421		1
	3UA58 30	3UX1421-OXA		1
Resetting plunger funnel	3UA5/6, 3UC5/6	3UX1011 3UX1013	POR	10 10
Reset cord + holder: 400 mm length 600 mm length	3UA5/6, 3UC5/6	3UX1015	POR	5
		3UX1016	POR	5
Protection cover	3UA58/3UA58 30 Other 3UA5/6	3UX11101YA 3UX11111YA	POR	10 10
		Set of 3 terminals to convert from 3UA5800-2. or 3UA5800-2.Z2 to 3UA5800-2.Z1 3UA5800-2.Z1 or 3UA5800-2.Z2 to 3UA5800-2. 3UA5800-2. or 3UA5800-2.Z1 to 3UA5800-2.Z2	3UX5811 3UX5812 3UX5813	POR



@ Can be converted to independent mounting using accessory.

# Motor Protection Circuit Breakers - 3RV



Class 10, without auxiliary switch, standard switching capacity, screw terminals

MPCB Specifications			MPCB with Standard release <sup>1)</sup>	
MPCB Size	MPCB rated current A	MPCB overload range A	Type*	Unit LP ↳
S00	0.16	0.11...0.16	3RV2011-0AA10	5,700/-
	0.2	0.14...0.2	3RV2011-0BA10	5,700/-
	0.25	0.18...0.25	3RV2011-0CA10	5,700/-
	0.32	0.22...0.32	3RV2011-0DA10	5,700/-
	0.4	0.28...0.4	3RV2011-0EA10	5,700/-
	0.5	0.35...0.5	3RV2011-0FA10	5,700/-
	0.63	0.45...0.63	3RV2011-0GA10	5,700/-
	0.8	0.55...0.8	3RV2011-0HA10	5,700/-
	1	0.7...1	3RV2011-0JA10	5,700/-
	1.25	0.9...1.25	3RV2011-0KA10	5,700/-
	1.6	1.1...1.6	3RV2011-1AA10	5,700/-
	2	1.4...2	3RV2011-1BA10	5,700/-
	2.5	1.8...2.5	3RV2011-1CA10	5,700/-
	3.2	2.2...3.2	3RV2011-1DA10	5,700/-
	4	2.8...4	3RV2011-1EA10	5,700/-
	5	3.5...5	3RV2011-1FA10	5,700/-
	6.3	4.5...6.3	3RV2011-1GA10	5,700/-
8	5.5...8	3RV2011-1HA10	5,700/-	
10	7...10	3RV2011-1JA10	7,400/-	
12.5	9...12	3RV2011-1KA10	7,400/-	
16	10...16	3RV2011-4AA10	7,400/-	
S0	20	13 ... 20	3RV2021-4BA10	7,700/-
	22	16 ... 22	3RV2021-4CA10	7,700/-
	25	18 ... 25	3RV2021-4DA10	9,800/-
	28	23 ... 28	3RV2021-4NA10	9,800/-
	32	27 ... 32	3RV2021-4EA10	9,800/-
	36	30 ... 36	3RV2021-4PA10	28,300/-
	40	34 ... 40	3RV2021-4FA10	28,300/-
	45	35 ... 45	3RV2031-4VA10	28,800/-
S2	52	42 ... 52	3RV2031-4WA10	30,800/-
	59	49 ... 59	3RV2031-4XA10	34,900/-
	65	54 ... 65	3RV2031-4JA10	34,900/-
	73	62 ... 73	3RV2031-4KA10	38,500/-
S3	80	70 ... 80	3RV2031-4RA10	40,600/-
	93	75 ... 93	3RV2041-4YA10	45,200/-
	100	80 ... 100	3RV2041-4MA10	45,700/-

1) MPCB trips on SC and also on OL

2) MPCB trips on SC and opens contactor on OL

3) MPCB trips on SC

\* Spring type terminals are not available for relay function MPCB 3RV21

\* 3RV20 and 3RV23: For ordering spring type terminal please replace 11th digit from "1" to "2" (available upto 32A in S00 and S0 only)

Standard packing for all above products is 1 no.

## Accessories for 3RV2

### Mountable accessories

Type of accessory	Version	MPCB size	Type*	Unit LP ↳	Std. pkg. (nos.)
Transverse auxiliary switches With screw terminals, mountable on front	1 CO	S00...S3	3RV2901-1D <sup>#</sup>	1,050/-	1
	1 NO + 1 NC	S00...S3	3RV2901-1E	1,250/-	1
	2 NO	S00...S3	3RV2901-1F	1,250/-	1

# Spring type terminals are not available for this accessory

\* For ordering with spring type terminals, please replace 8th digit from '1' to '2' Type

## Digital soft starters - SIRIUS 3RW30/55



### 3RW30

From 1.5 - 55 kW

- Compact design
- Integrated bypass contact system
- Soft start
- Innovative 2-phase "Polarity Balancing" operation

### 3RW55: for heavy duty and high end applications From 5.5 - 710 kW

- Main Voltage: 200-480V & 200-690V
- Bypass System: Integrated (Hybrid technology)
- Controlled Phases: 3
- Connection Type: Standard & Inside Delta
- Control Voltage: 24V AC/DC & 110-250V AC
- Motor over load protection class: 5/10/15/20/30
- Analog output: 0-10V & 4-20mA (Optional)
- Communication protocol (Optional) - PN-Std, PN-HF, PB, MB-TCP, MB-RTU
- Operator Panel: High features HMI
- Optionally available Failsafe Variant
- With unique Autoparameterisation feature



Rated operating voltage U <sub>e</sub> , In line circuit V AC	Motor rating at 415V, 40°C, normal starting, in line circuit kW	Rated operating current I <sub>e</sub> (AC-53a) A (40°C/50°C/60°C)	Type	Unit LP ₹	Std. pkg. (nos)
200-480	1.5	3.6/3.3/3	3RW3013-1BB\$4	19,500/-	1
200-480	3	6.5/6/5.5	3RW3014-1BB\$4	22,000/-	1
200-480	4	9/8/7	3RW3016-1BB\$4	24,000/-	1
200-480	5.5	12.5/12/11	3RW3017-1BB\$4	27,000/-	1
200-480	7.5	17.6/17/14	3RW3018-1BB\$4	31,000/-	1
200-480	11	25.3/23/21	3RW3026-1BB\$4	36,500/-	1
200-480	15	32.2/29/26	3RW3027-1BB\$4	42,000/-	1
200-480	18.5	38/34/31	3RW3028-1BB\$4	52,000/-	1
200-480	22	45/42/39	3RW3036-1BB\$4	64,000/-	1
200-480	30	65/58/53	3RW3037-1BB\$4	78,000/-	1
200-480	37	72/62.1/60	3RW3038-1BB\$4	92,000/-	1
200-480	45	80/73/66	3RW3046-1BB\$4	106,000/-	1
200-480	55	106/98/90	3RW3047-1BB\$4	118,000/-	1

\$ Order No. supplement for rated control supply voltage U<sub>s</sub>

• 24 V AC/DC 0

• 110 ... 230 V AC/DC 1

Rated operating voltage U <sub>e</sub> , in line circuit V AC	Motor rating at 415V, 40°C, normal starting, (in line circuit) kW	Motor rating at 415V, 40°C, normal starting, (in delta circuit) kW	Rated operating current I <sub>e</sub> (AC-53a) A (40°C/50°C)	Type	Unit LP ₹	Std. pkg. (nos)
200...480	75	132	153/128	3RW5535-6HA\$4	464,000/-	1
200...480	90	160	171/151	3RW5536-6HA\$4	538,500/-	1
200...480	110	200	210/186	3RW5543-6HA\$4	626,500/-	1
230...480	132	250	250/220	3RW5544-6HA\$4	732,000/-	1
230...480	160	315	315/279	3RW5545-6HA\$4	866,500/-	1
230...480	200	355	370/328	3RW5546-6HA\$4	1,016,500/-	1
230...480	250	400	470/416	3RW5547-6HA\$4	1,194,500/-	1
230...480	315	560	570/504	3RW5548-6HA\$4	1,344,500/-	1
200...480	355	630	630/561	3RW5552-6HA\$4	1,494,500/-	1
200...480	400	710	720/641	3RW5553-6HA\$4	1,655,000/-	1
200...480	450	800	840/748	3RW5554-6HA\$4	1,794,500/-	1
200...480	560	1000	1100/979	3RW5556-6HA\$4	2,088,000/-	1
200...480	710	1200	1280/1139	3RW5558-6HA\$4	2,397,500/-	1

\$ Control voltage code:

• 24V AC/DC 0

• 115---250V AC 1

\* - For 3RW55 with operating voltage U<sub>e</sub> 200...690V AC: Change the last digit of MLFB from "4" to "6" and increase the standard operating voltage list price by 30%.

- For 3RW55 with fail safe variant: Change the 10th digit of MLFB from "A" to "F" and increase the standard operating voltage list price by 15% (available up to 315kW)

Note: Commissioning service is available at extra cost.

In the event of deviating conditions or higher switching frequency, it may be necessary to choose a larger unit.

Siemens recommends use of selection and simulation program  
Simulation Tool for Soft Starters (STS).

Refer technical specifications for more details.

For more details, please visit: [www.siemens.com/softstarter](http://www.siemens.com/softstarter)

Siemens switchgear. Tried, tested, trusted.

## Agriculture Starters

NEW



### DOL

Starter in S. S. housing, incl. birelay with SPP

Motor rating at 415V, 3ph, 50Hz		Type <sup>1)</sup> (DOL)	Relay range A	Unit MRP* ‡	Std. pkg. (nos.)
HP	KW				
0.33	0.25	3TW72911A.64	0.63-1	7,100/-	1
0.75	0.55	3TW72911A.66	1-1.6	7,100/-	1
1	0.75	3TW72911A.68	1.6-2.5	7,100/-	1
1.5	1.1	3TW72911A.69	2-3.2	7,100/-	1
2	1.5	3TW72911A.71	3.2-5	7,100/-	1
3	2.2	3TW72911A.72	4-6.3	7,100/-	1
5	3.7	3TW72911A.74	6.6-10	7,100/-	1
-	-	3TW72911A.75	8-12.5	7,100/-	1
7.5	5.5	3TW72911A.77	10-16	7,100/-	1
10	7.5	3TW72911A.78	12.5-20	8,200/-	1

1) Enter code for coil voltage, 50Hz (B for 200-400V, W for 415V)

Extra MRP of R 160 for RAJA+ DOL starters 3TW72931A... (0.33-5HP) with 18A contactor

### Star Delta

Automatic starter in S.S. housing, incl. birelay with SPP

Motor rating at 415V, 3ph, 50Hz		Type <sup>4)</sup> (ASD)	Relay range A	Unit MRP* ‡	Std. pkg. (nos.)
HP	KW				
10	7.5	3TE72910AW74	6.3-10	26,300/-	1
12.5	9.3	3TE72910A.75	8-12.5	29,600/-	1
15	11	3TE72910A.77	10-16	32,800/-	1
20	15	3TE72910A.78	12.5-20	34,500/-	1
25	18.5	3TE72910A.79	16-25	36,500/-	1

4) Enter code for coil voltage, 50Hz (B for 200-400V, W for 415V)



## Industrial Starters

### DOL

DOL Starter in S.S.housing (without birelay - to be ordered separately)

Motor rating at 415V, 3ph, 50Hz		Type <sup>2)</sup> (DOL)	Birelay (recommended)	Unit MRP* ‡	Std. pkg. (nos.)
HP	KW				
15	11	3TW7493-2AR0*	3US5200-2C8K (16-25A)	8,500/-	1
20	15	3TW7494-2A...	3US5600-2D8K (20-32A)	10,300/-	1
25	18.5	3TW7495-2A...	3US5600-2 Q8K (25-36A)	10,700/-	1
30	22	3TW7496-2A...	3US5800-2F8K (32-50A)	23,300/-	1
40	30	3TW7497-2A...	3US5800-2T8K (40-57A)	24,100/-	1
50	37	3TW7498-2A...	3US5800-2V8K (57-70A)	25,400/-	1
60	45	3TW7499-2A...	3US5800-8Y8K (70-95A)	30,200/-	1
75	55	3TW7590-2A...	3US5800-5C8K (85-105A)	31,800/-	1

\* Only coil voltage of 415V 50Hz available

2) Enter code for coil voltage, 50Hz ("R0" for 415V, "P0" for 230V)

† 3TE75 have in-built birelay whereas 3TE74 doesn't have in-built birelay

For selection and LPs of spares for Industrial Starter contact sales

### Star Delta

Automatic Star delta starter in S.S. housing (without birelay - to be ordered separately)

Motor rating at 415V, 3ph, 50Hz		Type <sup>2)</sup> (ASD)	Birelay (recommended)	Unit MRP* ‡	Std. pkg. (nos.)
HP	KW				
30	22	3TE7493-2A...	3US5200-2C8K (16-25A)	32,500/-	1
40	30	3TE7494-2A...	3US5600-2D8K (20-32A)	34,300/-	1
50	37	3TE7495-2A...	3US5600-2 Q8K (25-36A)	35,200/-	1
60	45	3TE7496-2A...	3US5800-2F8K (32-50A)	65,500/-	1
75	55	3TE7497-2A...	3US5800-2T8K (40-57A)	69,800/-	1
100	75	3TE7594-2AR0*†	3US5800-8Y8K (70-95A)†	1,45,000/-	1
125	90	3TE7595-2AR0*†	3US5800-8Y8K (70-95A)†	1,48,000/-	1
150	110	3TE7596-2AR0*†	3US5800-5D8K (95-120A)†	1,54,000/-	1
180	132	3TE7596-2AR0*†	3US5800-5B8K (115-180A)†	1,67,600/-	1



## Electronic timers - 3RP

Function	Time range	Input voltage		Type	Unit LP ↳	Std. pkg (nos.)
		AC (50/60Hz)	DC			
On-delay with 1C/O contacts	0.5 – 10 sec	24/100-127 24/200-240	24 24	3RP1511-1AQ308K 3RP1511-1AP308K	6,600/-	1 1
	5 – 100 sec	24/100-127 24/200-240	24 24	3RP1513-1AQ308K 3RP1513-1AP308K	6,500/-	1 1
	0.05 sec to 100 Hrs. (15 time setting ranges)	24/100-127 24/200-240	24 24	3RP1525-1AQ308K 3RP1525-1AP308K	8,400/-	1 1
		24 to 240	24 to 240	3RP1525-1BW308K#	13,200/-	1
Off-delay with 1C/O contacts	0.5 – 10 sec	24/100-127 24/200-240	24 24	3RP1531-1AQ308K 3RP1531-1AP308K	8,900/-	1 1
	5 – 100 sec	24/100-127 24/200-240	24 24	3RP1533-1AQ308K 3RP1533-1AP308K	8,900/-	1 1
Multi-function with 1C/O contacts	0.05 sec to 100 Hrs. (15 time setting ranges)	24 - 240	24 - 240	3RP1505-1AW308K	13,300/-	1
	Label set - 8 functions (On delay, Off delay, On+Off delay, flashing, pulse make contact, pulse break contact, pulse shaping and additive ON delay)			3RP1901-0A8K*	8,200/-	1 pack
Star-Delta 1NO inst & 1NO delayed	1 – 20 sec	200-240 / 380-440V AC		3RP1574-1NM208K	7,000/-	1
	3 – 60 sec	24/100-127	24	3RP1576-1NQ308K	8,000/-	1
		24/200-240	24	3RP1576-1NP308K	8,000/-	1
		200-240/380-440V AC		3RP1576-1NM208K	8,000/-	1
		230-400V AC		3RP1576-1NP208K	8,000/-	1
Push-in lug (for mounting 3RP timer with screws)				3RP19038K (1 pack = 10 pcs)	6,000/-	1 pack

# with 2C/O contacts      \$ Price per pack      \* 1 pack consists of 1 label set

## 3RR2 Current monitoring relays

The relays can be installed as a stand-alone unit using the suitable terminal bracket.

### Screw Terminals



Size of relay / contactor	Set current value of the inverse-time delayed overload release A	Supply voltage	Type*	Unit LP ↳	Std. pkg. (nos.)
<b>Basic Version</b>					
S00	1.6...16	24V AC/DC	3RR2141-1AA30	POR	1
	1.6...16	24...240V AC/DC	3RR2141-1AW30		1
S0	4 ... 40	24V AC/DC	3RR2142-1AA30		1
	4 ... 40	24...240V AC/DC	3RR2142-1AW30		1

Size of relay / contactor	Set current value of the inverse-time delayed overload release A	Supply voltage	Type*	Unit LP ↳	Std. pkg. (nos.)
<b>Standard Version</b>					
S00	1.6...16	24V AC/DC	3RR2241-1FA30	POR	1
	1.6...16	24...240V AC/DC	3RR2241-1FW30		1
S0	4 ... 40	24V AC/DC	3RR2242-1FA30		1
	4 ... 40	24...240V AC/DC	3RR2242-1FW30		1

For ordering terminal bracket for stand alone installation please refer page no. 45

\*For ordering current monitoring relay 3RR with spring type terminals, please replace 8th digit from '1' to '2'

## Line monitoring relays - 3UG

Phase Sequence	Phase Failure	Phase Imbalance	Under Voltage	Over Voltage	Delay times	Display	Contacts	Line Supply Voltage	Type	Unit LP ↳	Std. pkg. (nos.)
Yes	Yes	10%	-	-	-	-	1 CO	160-690V	3UG4512-1AR20	POR	1
Yes	Yes	20%	160-690V	-	Off delay 0.1-20 s	-	2 CO	160-690V	3UG4513-1BR20		1
Yes	Yes	Yes	160-690V	160-690V	Off delay 0.1-20 s	Yes	2 CO	160-690V	3UG4615-1CR20		1

# Plug-in-relay - 7RQ



## Features and Benefits

- LED status indicator as a standard feature - allows personnel to see the relay status in dark conditions
- Mechanical indicators - allow personnel to see relay status under normal light or bright conditions
- Easy grip cover - adds to the ease of removing the relay from the socket
- Removable I.D. (identification) label- allows for easy identification
- Wide operating voltage range
- DIN rail / PCB mounting – Quick & Easy Installation



Relay	Standard Features	Control supply voltage* (V)	Type	Unit LP ↴	Std. pkg. (nos.)
<b>1CO</b>					
	<ul style="list-style-type: none"> <li>• Mechanical Flag</li> <li>• LED indicator</li> <li>• Free wheeling diode</li> </ul>	DC	24	7RQ0100-0AC00	550/- 10
			48	7RQ0100-0AD00	700/- 10
			110	7RQ0100-0AE00	1,000/- 10
	<ul style="list-style-type: none"> <li>• Mechanical Flag</li> <li>• LED indicator</li> </ul>	AC	24	7RQ0100-0AM10	600/- 10
			48	7RQ0100-0AN10	1,000/- 10
			110	7RQ0100-0AP10	1,200/- 10
230	7RQ0100-0AR10	1,400/- 10			
<b>2CO</b>					
	<ul style="list-style-type: none"> <li>• Mechanical Flag</li> <li>• LED indicator</li> <li>• Free wheeling diode</li> </ul>	DC	24	7RQ0100-0BC00	800/- 10
			48	7RQ0100-0BD00	1,000/- 10
			110	7RQ0100-0BE00	1,200/- 10
	<ul style="list-style-type: none"> <li>• Mechanical Flag</li> <li>• LED indicator</li> </ul>	AC	24	7RQ0100-0BM10	950/- 10
			48	7RQ0100-0BN10	1,100/- 10
			110	7RQ0100-0BP10	1,200/- 10
230	7RQ0100-0BR10	1,400/- 10			
<b>2CO</b>					
	<ul style="list-style-type: none"> <li>• LED indicator</li> </ul>	DC	24	7RQ0110-0BC00	1,100/- 10
			48	7RQ0110-0BD00	1,200/- 10
			110	7RQ0110-0BE00	1,350/- 10
	<ul style="list-style-type: none"> <li>• LED indicator</li> </ul>	AC	24	7RQ0110-0BM00	1,200/- 10
			48	7RQ0110-0BN00	1,350/- 10
			110	7RQ0110-0BP00	1,350/- 10
230	7RQ0110-0BR00	1,500/- 10			
<b>3CO</b>					
	<ul style="list-style-type: none"> <li>• LED indicator</li> </ul>	DC	24	7RQ0100-0CC00	1,300/- 10
			48	7RQ0100-0CD00	1,350/- 10
			110	7RQ0100-0CE00	1,550/- 10
	<ul style="list-style-type: none"> <li>• LED indicator</li> </ul>	AC	24	7RQ0100-0CM00	1,350/- 10
			48	7RQ0100-0CN00	1,450/- 10
			110	7RQ0100-0CP00	1,550/- 10
230	7RQ0100-0CR00	1,550/- 10			
<b>4CO</b>					
	<ul style="list-style-type: none"> <li>• LED indicator</li> </ul>	DC	24	7RQ0100-0DC00	1,300/- 10
			48	7RQ0100-0DD00	1,350/- 10
			110	7RQ0100-0DE00	1,550/- 10
	<ul style="list-style-type: none"> <li>• LED indicator</li> </ul>	AC	24	7RQ0100-0DM00	1,350/- 10
			48	7RQ0100-0DN00	1,450/- 10
			110	7RQ0100-0DP00	1,550/- 10
230	7RQ0100-0DR00	1,550/- 10			

\* Control supply voltage available upon request: 6V & 12V in AC / DC  
115 V AC

Socket	Standard Features	Type	Unit LP ↴	Std. pkg. (nos.)
<b>1CO</b>				
	PCB mounted	7RQ0202-1AX00	250/-	10
	Din rail mounting	7RQ0201-1AX00	450/-	10
<b>2CO</b>				
	PCB mounted	7RQ0202-1BX00	250/-	10
	Din rail mounting	7RQ0201-1BX00	600/-	10
<b>2CO</b>				
	PCB mounted	7RQ0212-1BX00	300/-	10
	Din rail mounting	7RQ0211-1BX00	700/-	10
<b>3CO</b>				
	Din rail mounting	7RQ0201-1CX00	950/-	10
<b>4CO</b>				
	PCB mounted	7RQ0202-1DX00	450/-	10
	Din rail mounting	7RQ0201-1DX00	700/-	10

Plug in Relay

# SIMOCODE Pro

## Basic Unit

Description	Type
Pro S on Profibus with 110-240VAC/DC control	3UF7020-1AU01-0
Pro S on Profibus with 24VDC control	3UF7020-1AB01-0
Pro V on Profibus with 110-240VAC/DC control	3UF7010-1AU00-0
Pro V on Profibus with 24VDC control	3UF7010-1AB00-0
Pro C on Profibus with 110-240VAC/DC control	3UF7000-1AU00-0
Pro C on Profibus with 24VDC control	3UF7000-1AB00-0
Pro V PN on Profinet with 110-240VAC/DC control	3UF7011-1AU00-0
Pro V PN on Profinet with 24VDC control	3UF7011-1AB00-0
Pro V on Modbus RTU with 110-240VAC/DC control	3UF7012-1AU00-0
Pro V on Modbus RTU with 24VDC control	3UF7012-1AB00-0
Pro V on EtherNet/IP with 110-240VAC/DC control	3UF7013-1AU00-0
Pro V on EtherNet/IP with 24VDC control	3UF7013-1AB00-0

## Current Measuring Module

Description	Type
0.3 to 3A	3UF7100-1AA00-0
2.4 to 25A	3UF7101-1AA00-0
10 to 100A	3UF7102-1AA00-0
20 to 200A	3UF7103-1AA00-0
20 to 200A (Busbar Connection)	3UF7103-1BA00-0
63 to 630A (Busbar Connection)	3UF7104-1BA00-0

## Current/Voltage Measuring Module (2nd generation)

Description	Type
0.3 to 4A	3UF7110-1AA01-0
3.0 to 40A	3UF7111-1AA01-0
10 to 115A	3UF7112-1AA01-0
20 to 200A	3UF7113-1AA01-0
20 to 200A (Busbar Connection)	3UF7113-1BA01-0
63 to 630A (Busbar Connection)	3UF7114-1BA01-0

Prices available on request

## Operator Panel (Optional)

Description	Type
Operator Panel (for Pro S)	3UF7200-1AA01-0
Operator Panel (for Pro C, Pro V)	3UF7200-1AA00-0
Operator Panel with Display (for Pro V)	3UF7210-1AA01-0

## Connecting Cable

Description	Type
Side by Side (0.025m flat)	3UF7930-0AA00-0
Length 0.1m (flat)	3UF7931-0AA00-0
Length 0.3m (flat)	3UF7935-0AA00-0
Length 0.5m (flat)	3UF7932-0AA00-0
Length 0.5m (round)	3UF7932-0BA00-0
Length 1m (round)	3UF7937-0BA00-0
Length 2.5m (round)	3UF7933-0BA00-0

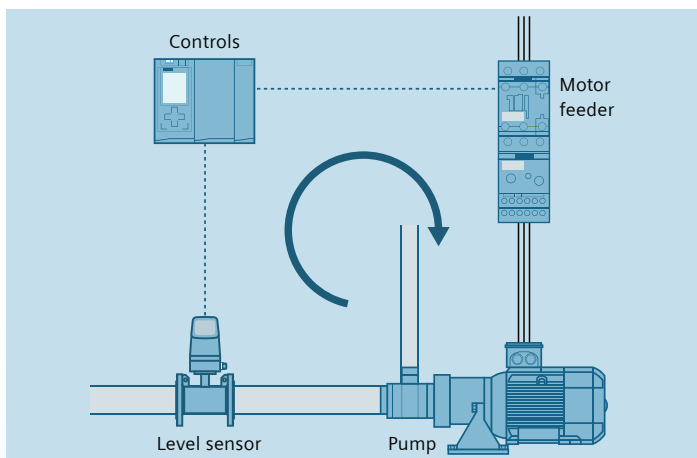
## Configuration Software

Description	Type
Upgrade for SIMOCODE ES 2007 Premium	3ZS1322-6CC12-0YE5
SIMOCODE ES V15 ( TIA Portal ) Premium Package – Floating license	3ZS1322-6CC13-0YA5

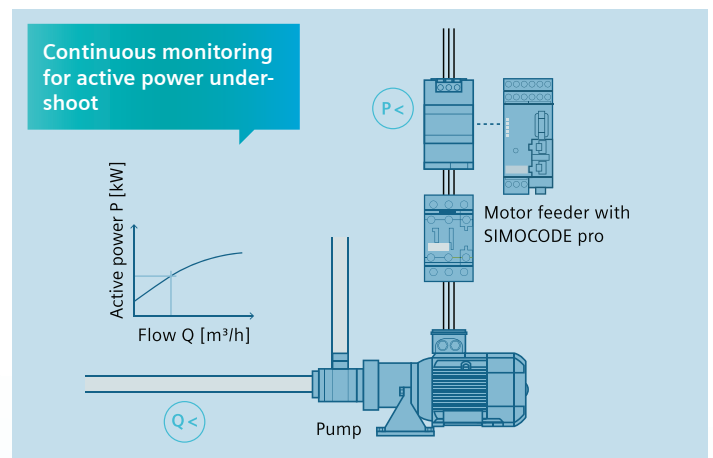
## Accessories

Description	Type
PC Cable for PC/PG communication - USB connection	3UF7941-0AA00-0
Memory Module for pro S, pro C & pro V on Profibus	3UF7900-0AA00-0
Memory Module for pro V PN on Profinet	3UF7901-0AA00-0
Addressing Plug for pro S, pro C & pro V on Profibus	3UF7910-0AA00-0
Door Adaptor	3UF7920-0AA00-0
Initialization module for the automatic parameterization of SIMOCODE pro S/pro V	3UF7902-0AA00-0

## Your benefits through active power-based dry running protection



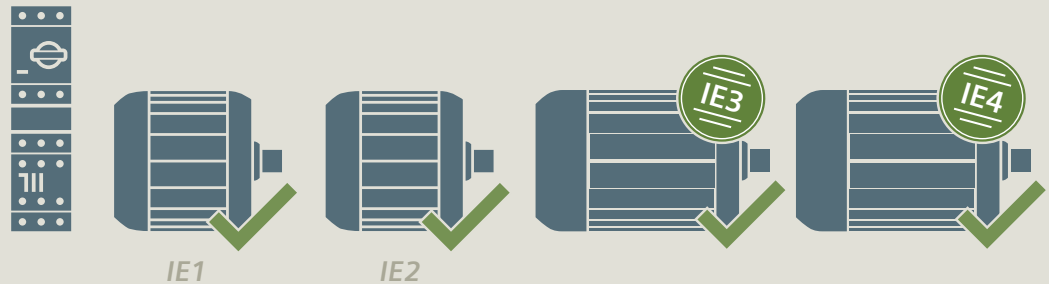
Conventional dry running monitoring with a sensor



Active power-based dry running protection

<p><b>Earlier fault detection</b></p> <ul style="list-style-type: none"> <li>• Direct conclusions concerning the flow rate can be drawn from the active power consumption of the pump motor</li> <li>• Reliable prevention of dry running of the pump and therefore less damage to the pump</li> </ul>	<p><b>Cost and time savings</b></p> <ul style="list-style-type: none"> <li>• No maintenance effort due to the elimination of mechanical wear of the sensors</li> <li>• No additional sensor required</li> </ul>	<p><b>Reduction of hardware</b></p> <ul style="list-style-type: none"> <li>• No need for additional sensors and mechanical components</li> <li>• Simplified engineering</li> </ul>	<p><b>Reliable monitoring of the system</b></p> <ul style="list-style-type: none"> <li>• Compliance with ATEX and IECEx criteria</li> <li>• Reliable and automatic pump switch-off in the event of inadmissible operating conditions</li> </ul>
--	---	--	---

**Reliable  
switching and  
protection  
of IE3/IE4  
motors  
at any time**



## Fuseless selection type 2, I<sub>q</sub> = 50kA, IS/IEC:60947-4-1 (Motor starter protector 3RV2 + Contactor 3RT )

Suitable for IE3/IE4

- The selection is valid only for complete Siemens combinations i.e. MPCB + contactor + bi-relay (+timer)
  - In case this combination is changed to accommodate another brand/rating of MPCB/MCCB/contactor/BMR, it shall be the responsibility of the person making such a change to assure Type 2 performance.
  - Selection is for normal starting conditions (Class 10 Feeder). For heavy starting applications (e.g. ID/FD fans, reciprocating compressor, ball mills etc.), please consult Siemens.
  - Tested Type 2 combinations
  - Low LCC = Low life cycle cost
- # 3RV20 comes with in-built overload protection, hence external bi-relay is eliminated

### Direct-on-line feeder, for low LCC

SL Motor		Circuit breaker®		Contactor		Bi-relay	
kW 415V, 3ph, 50/60 Hz	I <sub>L</sub> Amps (Guide value)	Type	Rating Amps	Type	Rating Amps	Type	Set-Range Amp
0.37	0.99	3RV2011-0KA10	1.25	3RT2015	7	#	0.9 ... 1.1
0.55	1.2	3RV2011-1AA10	1.6	3RT2015	7	#	1.1 ... 1.4
0.75	1.7	3RV2011-1CA10	2.5	3RT2015	7	#	1.8 ... 2.2
1.1	2.2	3RV2011-1DA10	3.2	3RT2015	7	#	2.2 ... 2.8
1.5	3.1	3RV2011-1FA10	5	3RT2024	12	#	3.5 ... 4.5
2.2	4.3	3RV2011-1GA10	6.3	3RT2024	12	#	4.5 ... 5.5
3.7	7.3	3RV2011-1HA10	8	3RT2024	12	#	5.5 ... 7
4	8.2	3RV2011-1JA10	10	3RT2024	12	#	7 ... 9
5.5	11	3RV2011-1KA10	12.5	3RT2024	12	#	9 ... 10
7.5	14	3RV2021-4BA10	20	3RT2027	32	#	13 ... 16
11	20	3RV2021-4DA10	25	3RT2027	32	#	18 ... 23
15	27	3RV2021-4EA10	32	3RT2027	32	#	27 ... 30 *
18.5	34	3RV2031-4UA10	40	3RT2035	40	#	32 ... 35
22	40	3RV2031-4WA10	52	3RT2036	50	#	42 ... 49
30	55	3RV2031-4JA10	65	3RT2037	65	#	54 ... 62
37	64	3RV2031-4KA10	73	3RT2038	80	#	62 ... 70
45	77	3RV2031-4RA10	80	3RT2038	80	#	70 ... 77 **
45	77	3RV2041-4RA10	84	3RT2046	95	#	65 ... 84
55	95	3RV2042-4MA10	100	3RT2047	110	#	80 ... 100
55	95	3VA2216-5MN32-0AA0	160	3RT1054	115	#	63 ... 115
75	129	3VA2216-5MN32-0AA0	160	3RT1055	150	#	63 ... 140
90	151	3VA2220-5MN32-0AA0	200	3RT1056	185	#	80 ... 175
110	186	3VA2325-5MN32-0AA0	250	3RT1064	225	#	100 ... 225
132	221	3VA2440-5MN32-0AA0	400	3RT1065	265	#	160 ... 265
160	267	3VA2440-5MN32-0AA0	400	3RT1066	300	#	160 ... 300
200	332	3VA2450-5MN32-0AA0	500	3RT1075	400	#	200 ... 400
250	420	3VA2450-5MN32-0AA0	500	3RT1076	500	#	200 ... 440

\* Starting current up to 256A

\*\* Starting current up to 720A

§ 3RV21 'relay function' motor protection circuit-breaker can also be used in place of 3RV10 / 3RV20 MPCB respectively

@ Motor switching operations with circuit breaker 3VA are not allowed.

Alternative combinations with 3VA1 available, contact nearest sales office

For more motor feeder selection charts with various SIRIUS devices see configuration manual "Configuring SIRIUS Innovations – Selection Data for Fuseless and Fused Load Feeders", <https://support.industry.siemens.com/cs/ww/en/view/39714188>



# Fuseless selection type 2, Iq = 50kA, IS/IEC:60947-4-1 (3RV/3VL with 3RT & 3RU)

Suitable for IE2 motors

- The selection is valid only for complete Siemens combinations i.e. MPCB / MCCB + contactor + bi-relay (+timer)
- In case this combination is changed to accommodate another brand/rating of MPCB/MCCB/contactor/BMR, it shall be the responsibility of the person making such a change to assure Type 2 performance.
- Selection is for normal starting conditions (class 10 feeder). For heavy starting applications (e.g. ID/FD fans, reciprocating compressor, ball mills etc.), please consult Siemens.
- The electronic star-delta timer type 3RP should be used in star-delta feeders.
- All selections with MPCB are Type tested, selections with MCCB are recommended. For type tested selections & higher breaking capacity refer "Load feeder configuration manual".
- Low LCC = Low life cycle cost

## Direct-on-line feeder, for low LCC

SL motor		Circuit breaker <sup>5</sup>		Contactor		Bi-relay	
kW 415V, 3ph, 50/60 Hz	I <sub>L</sub> Amp	Type	Amp	Type	Amp	Type	Set-Range Amp
0.37	1.1	3RV2011-0KA10	1.25	3RT2015	7	#	0.9 ... 1.25
0.55	1.4	3RV2011-1AA10	1.6	3RT2015	7	#	1.1 ... 1.6
0.75	1.7	3RV2011-1BA10	2	3RT2015	7	#	1.4 ... 2
1.1	2.4	3RV2011-1DA10	3.2	3RT2015	7	#	2.2 ... 3.2
1.5	3.2	3RV2011-1EA10	4	3RT2015	7	#	2.8 ... 4
2.2	4.8	3RV2011-1GA10	6.3	3RT2024	12	#	4.5 ... 6.3
3.7	7.4	3RV2011-1HA10	8	3RT2024	12	#	5.5 ... 8
4	8.5	3RV2011-1JA10	10	3RT2024	12	#	7.....10
5.5	11.5	3RV2011-1KA10	12.5	3RT2024	12	#	9 ... 12.5
7.5	15	3RV2011-4AA10	16	3RT2026	25	#	11.....16
11	21	3RV2021-4DA10	25	3RT2027	32	#	20 ... 25
15	29	3RV2021-4EA10	32	3RT2027	32	#	27 ... 32
18.5	34	3RV2031-4UA10	40	3RT2035	40	#	32 ... 40
22	40	3RV2031-4VA10	45	3RT2036	50	#	35 ... 45
30	57	3RV2031-4JA10	65	3RT2037	65	#	54 ... 65
37	64	3RV2031-4KA10	73	3RT2038	80	#	62 ... 73
45	77	3RV2031-4RA10	80	3RT2038	80	#	70 ... 80
55	101	3RV1041-4MA10	100	3RT1054	115	#	80 ... 100
55	101	3VA1112-5MH32-0AA0	125	3RT1054	115	3RU2156-5CB10-8K	90... 125
75	134	3VA1216-5MH32-0AA0	160	3RT1055	150	3RU2156-5DB10-8K	110 ... 160
90	160	3VA1220-5MH32-0AA0	200	3RT1056	185	3RU2156-5EB10-8K	140 ... 200
110	190	3VA1325-5MH32-0AA0	250	3RT1064	225	3RU2166-5FB10-8K	180 ... 250
132	228	3VA1325-5MH32-0AA0	250	3RT1065	265	3RU2166-5FB10-8K	180 ... 250
160	269	3VA1332-5MH32-0AA0	320	3RT1066	300	3RU2166-5GB10-8K	220 ... 320
200	350	3VA1440-5MH32-0AA0	400	3RT1075	400	3RU2176-5HB10-8K	280 ... 400
250	430	3VA1450-5MH32-0AA0	500	3RT1076	500	3RU2176-5JB10-8K	350 ... 500

<sup>5</sup> 3RV11 / 3RV21 'relay function' motor protection circuit-breaker can also be used in place of 3RV10 / 3RV20 motor protection circuit-breaker respectively

# 3RV10 / 3RV20 comes with in-built overload protection, hence external bi-relay is eliminated

## Star-Delta feeder, for Low LCC

Suitable for IE2/IE3/IE4 Motors

SL motor			Circuit breaker <sup>5</sup>		Contactor line/delta		Contactor star		Bi-relay		Timer
kW 415V, 3ph, 50/60 Hz	I <sub>L</sub> Amps	I <sub>Ph</sub> Amps	Type	Rating Amps	Type	Rating Amps	Type	Rating Amps	Type	Set-Range Amp	Type
5.5	11.5	6.7	3RV2321-4AC10	16	3RT2026	25	3RT2015	7	3RU2126-1HB0	5.5 - 8	3RP15
7.5	15	8.7	3RV2321-4BC10	20	3RT2026	25	3RT2015	7	3RU2126-1JB0	7-10	3RP15
11	21	12.2	3RV2321-4DC10	25	3RT2027	32	3RT2024	12	3RU2126-4AB0	11...16	3RP15
15	29	16.8	3RV2321-4EC10	32	3RT2027	32	3RT2024	12	3RU2126-4BB0	14 ... 20	3RP15
18.5	34	19.7	3RV2331-4UC10	40	3RT2035	40	3RT2027	32	3RU2136-4DB0	18 ... 25	3RP15
22	40	23.2	3RV2331-4VC10	45	3RT2036	50	3RT2027	32	3RU2136-4EB0	22 ... 32	3RP15
30	57	33.1	3RV2332-4JC10	65	3RT2037	65	3RT2035	40	3RU2136-4FB0	28 ... 40	3RP15
37	64	37.1	3RV2331-4KC10	73	3RT2038	80	3RT2035	40	3RU2136-4GB0	36 ... 45	3RP15
45	77	44.7	3RV2331-4RC10	80	3RT2038	80	3RT2035	40	3RU2136-4HB0	40 ... 50	3RP15
55	101	58.6	3RV2341-4MC10	100	3RT2047	110	3RT2035	40	3RU2146-4JB0	45 ... 63 **	3RP15
55	101	58.6	3RV2341-4MC10	100	3RT1054	115	3RT2037	65	3RU2146-4JB0	45 ... 63	3RP15
55	101	58.6	3VA1112-5MH32-0AA0	125	3RT1054	115	3RT2037	65	3RU2146-4JB0	45 ... 63	3RP15
75	134	77.7	3VA1216-5MH32-0AA0	160	3RT1055	150	3RT2037	65	3RU2146-4LB0	70 ... 90	3RP15
90	156	90.5	3VA1220-5MH32-0AA0	200	3RT1056	185	3RT2037	65	3RU2156-5BB10-8K	70 ... 100	3RP15
110	190	110.2	3VA1325-5MH32-0AA0	250	3RT1064	225	3RT1054	115	3RU2156-5CB10-8K	90 ... 125	3RP15
132	228	132.2	3VA1325-5MH32-0AA0	250	3RT1065	265	3RT1054	115	3RU2156-5DB10-8K	110 ... 160	3RP15
160	269	156	3VA1332-5MH32-0AA0	320	3RT1066	300	3RT1054	115	3RU2156-5EB10-8K	140 ... 200	3RP15
200	350	203	3VA1440-5MH32-0AA0	400	3RT1075	400	3RT1064	225	3RU2166-5FB10-8K	180 ... 250	3RP15
250	430	249	3VA1450-5MH32-0AA0	500	3RT1076	500	3RT1065	265	3RU2166-5GB10-8K	220 ... 320	3RP15

\*\* Starting current up to 780A

## Fuse protected selection type 2, I<sub>q</sub> = 50kA, IS/IEC:60947-4-1 (3KL with 3RT & 3RU)

Suitable for IE2 motors

- The selection is valid only for complete Siemens combinations i.e. SDF + DIN Fuse + Contactor + Bi-Relay (+ timer).
- In case this combination is changed to accommodate another brand/rating of SDF/DIN Fuse/Contactor/BMR, it shall be the responsibility of the person making such a change to assure type 2 performance.
- Selection is for normal starting conditions (class 10 feeder). (For heavy starting applications e.g. ID/FD fans, reciprocating compressor, ball mills etc., please consult Siemens.)
- The electronic star-delta timer type 3RP should be used in star-delta feeders.
- SDF: Switch Disconnecter Fuse. All fuses are DIN HRC type.
- Tested Type 2 combinations
- Low LCC = Low Life Cycle Cost

### Direct-on-line feeder, for Low LCC

SL Motor		SDF		Fuse		Contactor		Bi-Relay	
kW 415V, 3ph, 50/60 Hz	I <sub>L</sub> Amps	Type	Amp	Type	Amps	Type	Rating Amps	Type	Set-Range Amp
0.37	1.1	3KL811	20	3NA78040RC	4	3RT2015	7	3RU2116-0KB0	0.9 ... 1.25
0.55	1.4	3KL811	20	3NA78040RC	4	3RT2015	7	3RU2116-1AB0	1.1 ... 1.6
0.75	1.7	3KL811	20	3NA78010RC	6	3RT2015	7	3RU2116-1BB0	1.4 ... 2
1.1	2.4	3KL811	20	3NA78010RC	6	3RT2015	7	3RU2116-1DB0	2.2 ... 3.2
1.5	3.2	3KL811	20	3NA78030RC	10	3RT2015	7	3RU2116-1EB0	2.8 ... 4
2.2	4.8	3KL811	20	3NA78050RC	16	3RT2015	7	3RU2116-1GB0	4.5 ... 6.3
3.7	7.4	3KL811	20	3NA78070RC	20	3RT2023	9	3RU2126-1JB0	7 ... 10
5.5	11.2	3KL812	32	3NA78100RC	25	3RT2024	12	3RU2126-1KB0	9 ... 12.5
7.5	15	3KL812	32	3NA78120RC	32	3RT2025	17	3RU2126-4AB0	11 ... 16
11	21	3KL815	63	3NA78200RC	50	3RT2026	25	3RU2126-4DB0	20 ... 25
15	28	3KL815	63	3NA78220RC	63	3RT2027	32	3RU2126-4EB0	27 ... 32
18.5	34	3KL821	100	3NA78240RC	80	3RT2035	40	3RU2136-4FB0	28 ... 40
22	40	3KL821	100	3NA78240RC	80	3RT2036	50	3RU2136-4GB0	36 ... 45
30	57	3KL821	100	3NA78300RC	100	3RT2037	65	3RU2136-4QB0	47 ... 57
37	64	3KL822	125	3NA78320RC	125	3RT2038	80	3RU2136-4KB0	62 ... 73
45	77	3KL822	125	3NA78320RC	125	3RT2038	80	3RU2136-4RB0	70 ... 80
55	101	3KL823	160	3NA78360RC	160	3RT1054	115	3RU2146-4MB0	80 ... 100
75	134	3KL831	200	3NA71400RC	200	3RT1055	150	3RU2156-5DB10-8K	110 ... 160
90	160	3KL832	250	3NA71440RC	250	3RT1056	185	3RU2156-5EB10-8K	140 ... 200
110	190	3KL832	250	3NA71440RC	250	3RT1064	225	3RU2166-5FB10-8K	180 ... 250
132	228	3KL833	315	3NA72520RC	315	3RT1065	265	3RU2166-5FB10-8K	180 ... 250
160	269	3KL834	400	3NA72600RC	400	3RT1066	300	3RU2166-5GB10-8K	220 ... 320
200	350	3KL841	500	3NA33650RC	500	3RT1075	400	3RU2176-5HB10-8K	280 ... 400
250	430	3KL841	500	3NA33650RC	500	3RT1076	500	3RU2176-5JB10-8K	350 ... 500

### Star-Delta feeder, for Low LCC

SL Motor			SDF		HRC Fuses		Contactor Line/Delta		Contactor Star		Bi-Relay		Timer
kW 415V, 3ph, 50/60 Hz	I <sub>L</sub> Amps	I <sub>Ph</sub> Amps	Type	Rating Amps	Type	Rating Amps	Type	Rating Amps	Type	Rating Amps	Type	Set-Range Amp	Type
4	7.8	4.5	3KL811	20	3NA78030RC	10	3RT2023	9	3RT2023	9	3RU2126-1FB0	3.5 ... 5	3RP15
5.5	11.2	6.5	3KL811	20	3NA78050RC	16	3RT2023	9	3RT2023	9	3RU2126-1HB0	5.5 ... 8	3RP15
7.5	15	9.2	3KL811	20	3NA78070RC	20	3RT2024	12	3RT2023	9	3RU2126-1JB0	7 ... 10	3RP15
11	21	12	3KL812	32	3NA78100RC	25	3RT2024	12	3RT2023	9	3RU2126-1KB0	9 ... 12.5	3RP15
15	28	16.2	3KL812	32	3NA78120RC	32	3RT2026	25	3RT2025	17	3RU2126-4BB0	14 ... 20	3RP15
18.5	34	19.7	3KL815	63	3NA78200RC	50	3RT2027	32	3RT2026	25	3RU2126-4CB0	17 ... 22	3RP15
22	40	23.2	3KL815	63	3NA78200RC	63	3RT2035	40	3RT2026	25	3RU2136-4DB0	18 ... 25	3RP15
30	57	30.6	3KL821	100	3NA78220RC	80	3RT2035	40	3RT2026	25	3RU2136-4EB0	22 ... 32	3RP15
37	64	37.5	3KL821	100	3NA78240RC	80	3RT2035	40	3RT2027	32	3RU2136-4FB0	28 ... 40	3RP15
45	77	45	3KL821	100	3NA78300RC	100	3RT2036	50	3RT2028	40	3RU2136-4HB0	40 ... 50	3RP15
55	101	55.4	3KL821	100	3NA78300RC	100	3RT2037	65	3RT2035	40	3RU2136-4JB0	54 ... 65	3RP15
75	134	75.6	3KL823	160	3NA78360RC	160	3RT2038	80	3RT2037	65	3RU2136-4RB0	70 ... 80	3RP15
90	156	90	3KL823	160	3NA78360RC	160	3RT2046	95	3RT2038	80	3RU2146-4LB0	70 ... 90	3RP15
110	190	113	3KL831	200	3NA71400RC	200	3RT1054	115	3RT1054	115	3RU2156-5CB10-8K	90 ... 125	3RP15
132	228	133	3KL832	250	3NA71440RC	250	3RT1055	150	3RT1054	115	3RU2156-5DB10-8K	110 ... 160	3RP15
160	269	162	3KL833	315	3NA72520RC	315	3RT1056	185	3RT1054	115	3RU2156-5EB10-8K	140 ... 200	3RP15
200	350	202	3KL834	400	3NA72600RC	400	3RT1064	225	3RT1056	185	3RU2166-5FB10-8K	180 ... 250	3RP15
250	430	248	3KL841	500	3NA33650RC	500	3RT1065	265	3RT1065	265	3RU2166-5GB10-8K	220 ... 320	3RP15

For information on prices of below products please refer to the  
LV Switchgear Motor Control Products valid Price list



---

## Terms and conditions

Maximum Retail Price (MRP) / List Price (LP) is subject to revision without prior notice.

The company reserves the right to supply goods at its works or godown at its discretion.

### Stock items

The normal stock items (indicated by ) are subject to change without prior notice.

---

### Note

- This supercedes all previous Price Lists.
  - List Prices (LPs) mentioned are inclusive of VAT & AIT.
  - Maximum Retail Prices (MRPs) mentioned in the publication are maximum recommended selling prices.
  - Invoice amount not to exceed MRP
  - Invoice amount = MRP (less) applicable discount
  - For receiving material in factory sealed packing, we request you to order in multiples of the indicated standard packing quantity.
- 

Ask your nearest Siemens partners to include you in our mailing list.

Always make your purchases only from our authorised dealers. Details available with our sales office/territory managers.